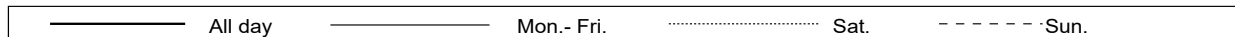
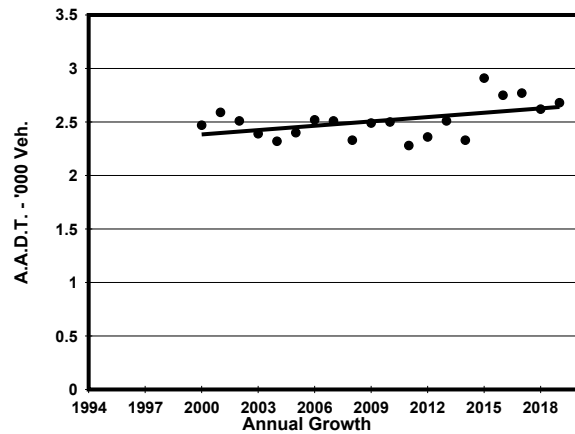
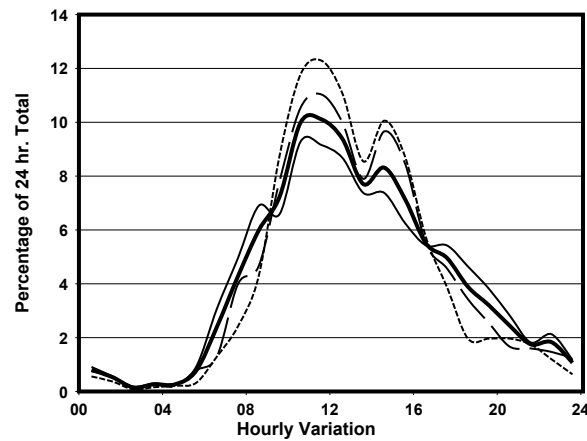
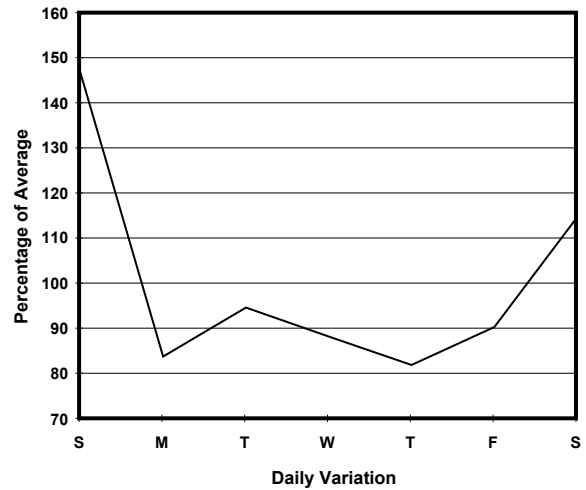
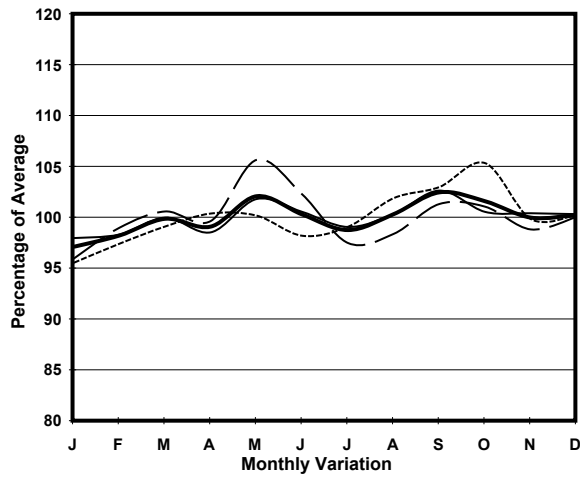


YEAR 2019  
 COVERAGE (B) STATION 2401  
 ROAD NETWORK MINOR  
 ROAD TYPE LOCAL DISTRIBUTOR

LINK LIN SHING RD (from WAN TSUI RD to CAPE COLLISION RD)



### 1. TRAFFIC FLOW VARIATION AND GROWTH



### 2. TRAFFIC CHARACTERISTICS (BY DIRECTION)

Parameter	All - Day	Mon. - Fri.	Sat.	Sun.
<b>SOUTH BOUND</b>				
A.A.D.T.	2340	2040	2510	3270
R 12 / 24 - %	82.6	80.1	85.8	88.2
R 16 / 24 - %	92.8	91.8	93.9	95.9
AM Peak Hour	0900-1000	0800-0900	0900-1000	0900-1000
One-way flow at AM peak hour	170	150	200	300
T - % (AM)	-	-	-	-
PM Peak Hour	1600-1700	1700-1800	1600-1700	1600-1700
One-way flow at PM peak hour	120	110	130	170
T - % (PM)	-	-	-	-
Prop.of commercial vehicles - 16 hr.	-	8.4	-	-
<b>NORTH BOUND</b>				
A.A.D.T.	340	260	490	570
R 12 / 24 - %	97.6	97.3	96.4	96.8
R 16 / 24 - %	100	98.8	99.4	99.3
AM Peak Hour	0900-1000	0900-1000	0900-1000	0900-1000
One-way flow at AM peak hour	30	20	40	40
T - % (AM)	-	37.5	-	-
PM Peak Hour	1600-1700	1600-1700	1600-1700	1600-1700
One-way flow at PM peak hour	30	20	40	50
T - % (PM)	-	11.1	-	-
Prop.of commercial vehicles - 16 hr.	-	5.7	-	-

### 3. OTHER INFORMATION AND COMMENT

**4. Vehicle classification and occupancy - Monday to Friday**

Time		Class of vehicle									
		Motor Cycle	Private Car	Taxi	Private LB	PLB	Goods veh.		Non Fr. Bus	Fr. Bus	
							Light	M & H		SD	DD
0700-0800	Pro	4.5	36.4	9.1	0.0	6.8	40.9	0.0	2.3	0.0	0.0
	Ocp	1.0	1.2	1.5	0.0	13.7	1.8	0.0	22.0	0.0	0.0
0800-0900	Pro	5.4	62.5	14.3	1.8	7.1	8.9	0.0	0.0	0.0	0.0
	Ocp	1.0	1.3	1.8	8.0	15.0	1.6	0.0	0.0	0.0	0.0
0900-1000	Pro	8.5	36.2	17.0	0.0	6.4	19.1	10.6	2.1	0.0	0.0
	Ocp	1.0	1.2	2.6	0.0	16.3	2.4	1.4	3.0	0.0	0.0
1000-1100 Peak hour	Pro	2.6	23.1	12.8	7.7	10.3	20.5	2.6	20.5	0.0	0.0
	Ocp	1.0	1.0	2.0	3.3	11.0	1.6	1.0	11.8	0.0	0.0
1100-1200	Pro	2.5	37.5	30.0	7.5	7.5	12.5	0.0	2.5	0.0	0.0
	Ocp	1.0	1.3	1.8	2.3	6.3	1.0	0.0	6.0	0.0	0.0
1200-1300	Pro	5.3	42.1	18.4	2.6	2.6	7.9	5.3	15.8	0.0	0.0
	Ocp	1.0	1.3	1.7	6.0	8.0	1.7	1.0	16.7	0.0	0.0
1300-1400	Pro	5.3	36.8	15.8	2.6	5.3	21.1	5.3	7.9	0.0	0.0
	Ocp	1.0	1.1	1.7	3.0	11.5	1.4	1.5	10.0	0.0	0.0
1400-1500	Pro	3.0	36.4	24.2	6.1	6.1	15.2	3.0	6.1	0.0	0.0
	Ocp	1.0	1.4	1.5	1.5	6.5	1.6	1.0	12.0	0.0	0.0
1500-1600	Pro	5.9	38.2	11.8	5.9	5.9	26.5	0.0	5.9	0.0	0.0
	Ocp	1.0	1.7	2.0	5.5	8.0	1.8	0.0	19.5	0.0	0.0
1600-1700	Pro	0.0	37.1	14.3	2.9	5.7	22.9	8.6	8.6	0.0	0.0
	Ocp	0.0	1.5	1.0	4.0	12.5	1.9	1.0	1.3	0.0	0.0
1700-1800	Pro	6.1	51.5	18.2	3.0	9.1	12.1	0.0	0.0	0.0	0.0
	Ocp	1.0	1.4	1.5	5.0	12.7	1.3	0.0	0.0	0.0	0.0
1800-1900	Pro	9.7	58.1	12.9	6.5	6.5	6.5	0.0	0.0	0.0	0.0
	Ocp	1.0	1.2	1.5	2.5	20.0	2.5	0.0	0.0	0.0	0.0
1900-2000	Pro	0.0	60.0	10.0	0.0	6.7	20.0	0.0	3.3	0.0	0.0
	Ocp	0.0	1.5	2.0	0.0	13.0	1.7	0.0	1.0	0.0	0.0
2000-2100	Pro	0.0	47.1	23.5	0.0	11.8	11.8	0.0	5.9	0.0	0.0
	Ocp	0.0	1.1	1.5	0.0	20.0	1.0	0.0	1.0	0.0	0.0
2100-2200	Pro	0.0	53.3	26.7	0.0	13.3	6.7	0.0	0.0	0.0	0.0
	Ocp	0.0	1.3	2.0	0.0	8.5	1.0	0.0	0.0	0.0	0.0
2200-2300	Pro	5.3	42.1	31.6	0.0	10.5	10.5	0.0	0.0	0.0	0.0
	Ocp	1.0	1.1	1.5	0.0	9.5	1.0	0.0	0.0	0.0	0.0
16 hours	Pro	4.4	43.2	17.1	3.1	7.1	17.3	2.6	5.3	0.0	0.0
	Ocp	1.0	1.3	1.7	3.6	12.3	1.7	1.2	11.2	0.0	0.0

**Legend: Pro.** Proportion of vehicles in % (Sum may not add up to 100% due to figure rounding)\*

**Ocp.** Average occupancy of vehicles including both driver and passengers\*

**M&H** Medium and Heavy

\* All traffic data are collected from combined bounds